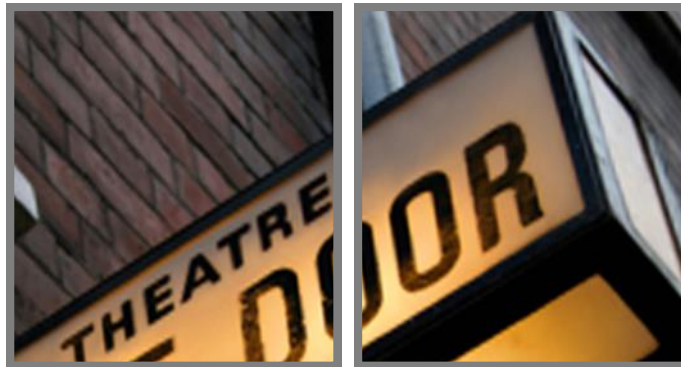


Lighting Lab

2023



Hire

Lighting, Audio & LED Screens



CONTENTS

LED SCREENS :

- Page 3 * LED Screen Panels
- * LED Screen Processors

THEATRE LIGHTING :

- Page 4 * Profile Spots
- * Fresnels / PC Spots
- * Parcans
- Page 5 * Cyc & Flood Lights
- * Follow Spots
- * LED Lights
- Page 6 * Moving Lights
- * Lighting Control
- * Dimmers and Power Distribution
- Page 7 * Effects Machine
- * Theatrical Lighting Effects
- * Strobes
- * UV Lights
- Page 8 * Lighting Stands
- * Truss
- * Staging and Risers
- * Curtain System

PARTY LIGHTING :

- Page 9 * Party and DJ Lights
- * Lasers
- * Mirror Balls
- Page 15 * Party Lighting Packages

AUDIO :

- Page 10 * Analog Mixers
- * Digital Mixers
- * Audio Processors and Equalisers
- Page 11 * Powered Speakers
- * Unpowered Speakers
- * Amplifiers
- Page 12 * Microphones and Dis
- * Radio Microphones
- Page 13 * DJ Equipment
- * Multicores
- * Audio Stands
- Page 14 * Audio Packages

HIRE CONDITIONS :

- Page 16

LED SCREENS

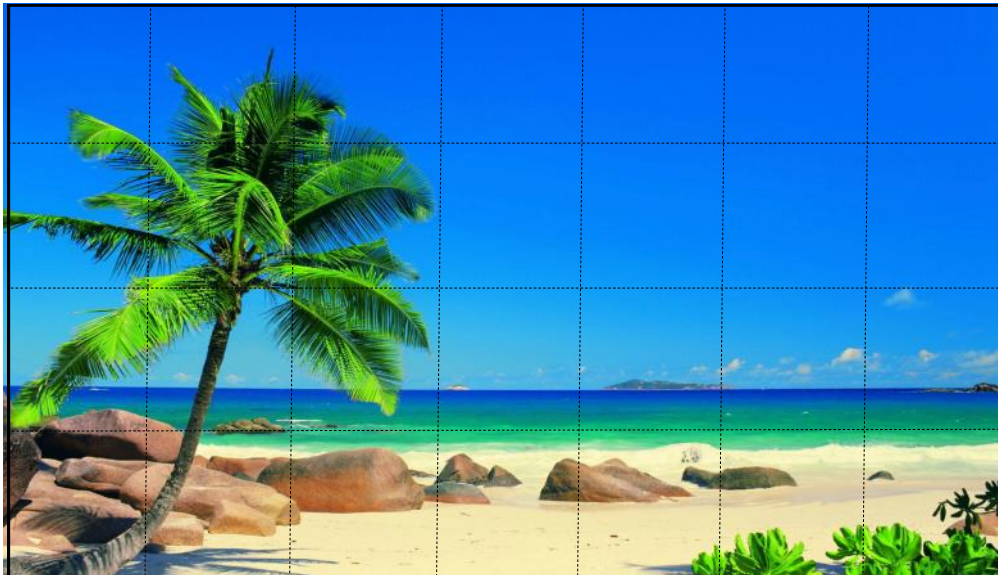


LED Screens have many advantages over the conventional projector and screen.

They can be much brighter so all lights can be left on stage or in the venue, outdoor screens are even bright enough to be used in full sunlight and are water proof.

Modular design means they can be any shape or size.

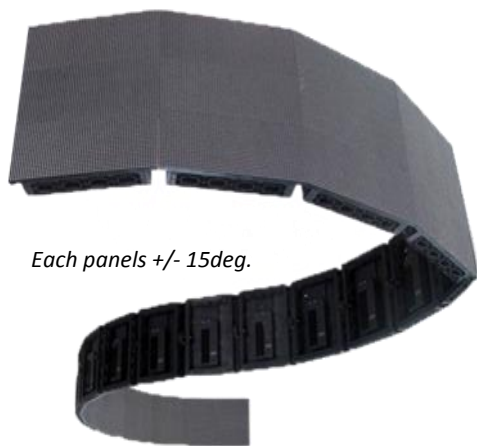
No need to worry about getting between the projector and the screen, as projectors can leave shadows on the screen - very important in theatre and TV shows.



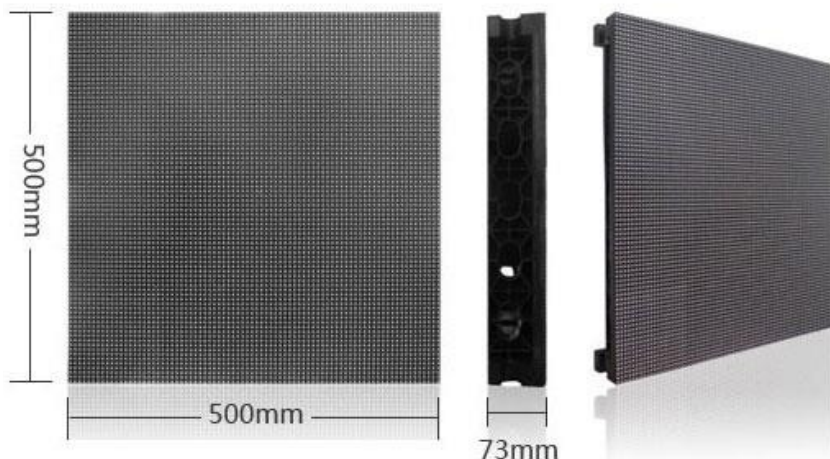
7 x 4 panel screen



LED SCREENS



Each panels +/- 15deg.



LED Panels come in different pitches -

P20, P6, P5, P3 & P2. This is the distance between each pixel (LED). The closer the pixels, the closer you can be to a screen and maintain a clear picture. A general rule that is used to calculate the minimum viewing distance from a screen without seeing the individual pixels is 1 metre per millimetre pitch : for example P20 screen is 20 metres, for a P6 screen is 6 metres and for a P3 screen is 3 metres, etc. etc.

LED PANELS

	FIRST DAY	ADDITIONAL DAY	LONG TERM P/W 3 WEEKS MIN.	PERM HIRE P/W 3 MONTHS MIN.
P20 Indoor LED Mesh Panel 640mm x 640mm, 9.5Kg/panel, 1300 Nits/Sq.m.	40.00	12.00	52.00	20.00
P6.25 Indoor LED Panel 450mm x 450mm, 4.5Kg/panel, 1300 Nits/Sq.m.	40.00	12.00	52.00	20.00
P5.9 Indoor LED Panel 500mm x 500mm, 6.4Kg/panel, 1100 Nits/Sq.m.	50.00	15.00	65.00	25.00
P3.9 Indoor LED Panel 500mm x 500mm, 5.7Kg/panel, 1100 Nits/Sq.	70.00	21.00	91.00	35.00
P2.6 Indoor LED Panel 500mm x 500mm, 5.7Kg/panel, 1100 Nits/Sq.m.	100.00	30.00	130.00	50.00
P2.6 Indoor LED Adjustable Corner Panel Two x 125mm x 500mm, 5.7Kg/panel, 1100 Nits/Sq.m.	100.00	30.00	130.00	50.00
P5.9 Indoor Fan shaped LED Panel 500mm x 500mm, 4.7Kg/panel, 1100 Nits/Sq.m.	60.00	18.00	78.00	30.00
P5.9 Indoor FLOOR LED Panel 500mm x 500mm, 7 Kg/panel, 3000 Nits/Sq.m.	60.00	18.00	78.00	30.00
Indoor / Outdoor Blank Panel 500mm x 500mm, 2.5Kg/panel	20.00	6.00	26.00	10.00
P5.9 Outdoor LED Panel 500mm x 500mm, 6.4Kg/panel, 6000 Nits/Sq.m.	60.00	18.00	78.00	30.00
P5.9 Outdoor Fan shaped LED Panel 500mm x 500mm, 4.7Kg/panel, 6000 Nits/Sq.m.	60.00	18.00	78.00	30.00



Novastar UHD Jr

A LED video processor is what goes between your video source and the panels. It allows us to make the screen any shape or size needed. It also allows different video sources to be used as well as switching from one source to another. Once we set it up for your screen(s) all you will need to do is plug in your source – computer, video player, camera(s) etc.

PROCESSORS

	FIRST DAY	ADDITIONAL DAY	LONG TERM P/W 3 WEEKS MIN.	PERM HIRE P/W 3 MONTHS MIN.
Novastar MCTRL 600 sender card	30.00	9.00	39.00	15.00
Novastar VX6S 2K Processor	50.00	15.00	65.00	25.00
Novastar Pro HD 2K Processor	65.00	19.50	84.50	32.50
Novastar VX1000 4K Processor	65.00	19.50	84.50	32.50
Novastar VHD Jr 4K Processor	295.00	88.50	383.50	147.50
Novastar Taurus TB50 2K Media Player	35.00	10.50	45.50	17.50
Novastar Taurus TB60 2K Media Player	35.00	10.50	45.50	17.50

THEATRE LIGHTING

LED Zoom Profile



Profile spots provide a sharp even output across the beam which can be shaped with it's internal shutters or by adding an iris or gobo (metal or glass slide). Zoom profiles have a zoom lens to adjust the image size.

PROFILE SPOTS

	FIRST DAY	ADDITIONAL DAY	LONG TERM P/W 3 WEEKS MIN.	PERM HIRE P/W 3 MONTHS MIN.
ETC Source 4 Junior Zoom 25-50 deg. 575w	12.00	3.60	15.60	6.00
ETC Source 4 Zoom 15-30 deg. 750w	23.00	6.90	29.90	11.50
ETC Source 4 Zoom 25-50 deg. 750w	23.00	6.90	29.90	11.50
Selecon Pacific Zoom 14-35 deg. 1000w	23.00	6.90	29.90	11.50
Selecon Pacific Zoom 23-50 deg. 1000w	23.00	6.90	29.90	11.50
Selecon Pacific Zoom Wide 90 deg. 1000w	23.00	6.90	29.90	11.50
LED Arts RGBAL LED Zoom Profile 15-30deg.	35.00	10.50	45.50	17.50
LED Arts RGBAL LED Zoom Profile 25-50deg.	35.00	10.50	45.50	17.50
Iris to suit Profile	6.00	1.80	7.80	3.00



1200w Fresnel

Fresnels and PC Spots are a soft edged spot, brighter in the centre, useful when overlapping a number of lights and produce a softer look. They have a large zoom range and can be shaped with the addition of barndoor shutters to the front of the light.

FRESNEL / PC SPOTS

	FIRST DAY	ADDITIONAL DAY	LONG TERM P/W 3 WEEKS MIN.	PERM HIRE P/W 3 MONTHS MIN.
Selecon Fresnel 500/650w	9.00	2.70	11.70	4.50
Selecon PC 500/650w	9.00	2.70	11.70	4.50
Selecon Fresnel 1200w	16.50	4.95	21.45	8.25
Phida Fresnel 1200w	16.50	4.95	21.45	8.25
Selecon PC 1200w	16.50	4.95	21.45	8.25
Phida Fresnel 2000w	19.50	5.85	25.35	9.75
Barndoors	3.00	0.90	3.90	1.50



Par 64

Par cans typically have an oval fixed angle beam. High in output but with limited control of the light. They are used more often with bands and large concerts, but are useful for their high output. Raylights and Pinspots are used for their narrow beam seen through smoke.

PARCANS

	FIRST DAY	ADDITIONAL DAY	LONG TERM P/W 3 WEEKS MIN.	PERM HIRE P/W 3 MONTHS MIN.
Par 20 50w	4.00	1.20	5.20	2.00
Par 36 Pinspot 30w	4.00	1.20	5.20	2.00
Par 56 NSP/MFL 300w	7.00	2.10	9.10	3.50
Par 64 (120v) VNSP/NSP/MFL 1000W	9.00	2.70	11.70	4.50
Raylight 500w	9.00	2.70	11.70	4.50

THEATRE LIGHTING

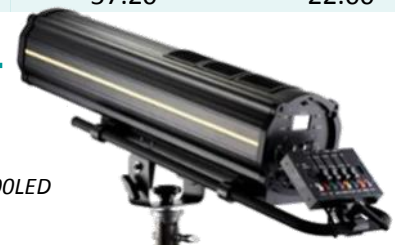


LEDArts
Arena 1000

Cyc lights are used to light walls and cycloramas from the floor or above best used from a distance of about 1 metre from the cyc and spaced a few metres apart.

CYC & FLOOD LIGHTS

	FIRST DAY	ADDITIONAL DAY	LONG TERM P/W 3 WEEKS MIN.	PERM HIRE P/W 3 MONTHS MIN.
LED Arts Arena 1000 LED Cyc Light : RGBDCLA	50.00	15.00	65.00	25.00
Kupo Single Cell Cyc Light 500w	8.00	2.40	10.40	4.00
Kupo Quad Cyc Light 500w x 4	32.00	9.60	41.60	16.00
Thomas Quad Cyc Light 1000w x 4	40.00	12.00	52.00	20.00
Molefay Duet 650w x 2 (audience blinder)	13.00	3.90	16.90	6.50
Molefay 8-Light 650w x 8	44.00	13.20	57.20	22.00



600LED

Follow Spots are a hand operated spotlight, typically operated from the back of the venue. In most cases talk-back is used between the lighting operator and the follow spot(s) to ensure coordination between each other.

FOLLOW SPOTS (price inc. Stand and Colour changer)

	FIRST DAY	ADDITIONAL DAY	LONG TERM P/W 3 WEEKS MIN.	PERM HIRE P/W 3 MONTHS MIN.
LED Arts LED Followspot - 350 LED (up to 40m)	50.00	15.00	65.00	25.00
LED Arts LED Followspot - 600 LED (up to 50m)	65.00	19.50	84.50	32.50
Phida 2000w Halogen (up to 35m)	35.00	10.50	45.50	17.50
Phida 1200w MSR—Arc Lamp (up to 50m)	65.00	19.50	84.50	32.50
I-Follow 1200w MSR—Arc Lamp (up to 50m)	65.00	19.50	84.50	32.50
Clay Paky 1200w MSR—Arc Lamp (up to 75m)	85.00	25.50	110.50	42.50



Pluto

LEDs are now the lamp of choice for most lighting designers. Producing bright vibrant colours without the need for colour filters, with the added bonus of low power, cool running and very long lamp life and are becoming available in most theatrical fixtures.

LED LIGHTS

	FIRST DAY	ADDITIONAL DAY	LONG TERM P/W 3 WEEKS MIN.	PERM HIRE P/W 3 MONTHS MIN.
LED Arts Mini Tri-colour Par (9x3w)	9.00	2.70	11.70	4.50
LED Arts Studio Tri-colour Par (18x3w)	16.50	4.95	21.45	8.25
LED Arts Studio Quad-colour Par (18x8w)	19.50	5.85	25.35	9.75
LED Arts 150w Soft Quad-colour Spot (1x150w)	19.50	5.85	25.35	9.75
LED Arts Studio UV Par (36 x 1w UV)	19.50	5.85	25.35	9.75
LED Arts Panning 1m. Tri-colour Strip (36x3w)	28.00	8.40	36.40	14.00
LED Arts 60w Moving Spot	30.00	9.00	39.00	15.00
LED Arts 200w Club Spot Moving Spot	60.00	18.00	78.00	30.00
LED Arts 300w Club Spot Moving Spot	75.00	22.50	97.50	37.50
LIGHTSKY 600w Super Scope Moving Profile Spot	165.00	49.50	214.50	82.50
LIGHTSKY 1200w Super Scope MAX Moving Profile	285.00	85.50	370.50	142.50
PLUTO 7 x 40w LED Zoom Wash	75.00	22.50	97.50	37.50
LIGHTSKY 12 x 40w PEARL LED Zoom Wash	85.00	25.50	110.50	42.50
LED Arts RGBAL LED Zoom Profile 15-30deg.	35.00	10.50	45.50	17.50
LED Arts RGBAL LED Zoom Profile 25-50deg.	35.00	10.50	45.50	17.50
LED Arts LED Followspot - 600 LED (up to 50m)	65.00	19.50	84.50	32.50
LED Arts LED Followspot - 350 LED (up to 40m)	50.00	15.00	65.00	25.00

THEATRE LIGHTING

Moving lights are a big part of modern stage lighting. Controlled from the lighting desk each light uses a number of channels, with each channel controlling a different function: pan, tilt, colour, gobo, etc. Multiple lights then make up different scenes. Movement between scenes can also be used to add movement during the show for effect.

Super Scope



MOVING LIGHTS

	FIRST DAY	ADDITIONAL DAY	LONG TERM P/W 3 WEEKS MIN.	PERM HIRE P/W 3 MONTHS MIN.
LED Arts 60w LED Spot	30.00	9.00	39.00	15.00
LED Arts 200w LED Club Spot Moving Spot	60.00	18.00	78.00	30.00
LED Arts 300w LED Club Spot Moving Spot	75.00	22.50	97.50	37.50
Light Sky 600w LED Super Scope Moving Profile	165.00	49.50	214.50	82.50
Light Sky 1200w LED Super Scope Moving Profile	285.00	85.50	370.50	142.50
Silverstar PLUTO 7 x 40w LED Zoom Wash	75.00	22.50	97.50	37.50
Light Sky PEARL 12 x 40w LED Zoom Wash	85.00	25.50	110.50	42.50
LED Arts LED Panning strip (36 x 3w)	23.00	6.90	29.90	11.50
Light Sky Bumble Bee 230 Arc Beam.	75.00	22.50	97.50	37.50
Light Sky Bumble Bee 230 MK2 Arc Beam	75.00	22.50	97.50	37.50
Light Sky Bumble Bee 330 Arc Zoom Spot	110.00	33.00	143.00	55.00

The lighting controller (lighting desk) is the heart of stage lighting. All of the lights and effects are controlled via the controller to make up scenes that are then played back during the show.



Mantra

CONTROL

	FIRST DAY	ADDITIONAL DAY	LONG TERM P/W 3 WEEKS MIN.	PERM HIRE P/W 3 MONTHS MIN.
LSC Mantra	37.00	11.10	48.10	18.50
LSC Mantra expansion wing	28.00	8.40	36.40	14.00
LSC Maxim S 12/24	37.00	11.10	48.10	18.50
LSC Maxim M 24/48	65.00	19.50	84.50	32.50
LSC Maxim L 36/72 with PatPad	138.00	41.40	179.40	69.00
Jands Event 408	130.00	39.00	169.00	65.00
Hog 1000	200.00	60.00	260.00	100.00
Grand MA (Full size)	700.00	150.00	N/A	N/A
LED Arts 5 channel Tri-colour controller	5.50	1.65	7.15	2.75
LED Arts 8 channel Quad-colour controller	5.50	1.65	7.15	2.75
Wireless DMX Transmitter	10.00	3.00	13.00	5.00
Wireless DMX Receiver	10.00	3.00	13.00	5.00



HP 12 Dimmer

While many newer lights no longer use an external dimmer to control them by having their dimmer built into the light. The traditional incandescent theatre lights still do.

DIMMERS and DISTROS

	FIRST DAY	ADDITIONAL DAY	LONG TERM P/W 3 WEEKS MIN.	PERM HIRE P/W 3 MONTHS MIN.
Jands 4 Pack 2.4 Kw 4 Channel (with chaser)	18.50	5.55	24.05	9.25
Jands 4 Pack D 2.4 Kw 4 Channel (with chaser) DMX	18.50	5.55	24.05	9.25
LSC Quadpac 5 Kw 4 Channel	18.50	5.55	24.05	9.25
Jands GP12 12 Channels x 2.4 Kw	45.00	13.50	58.50	22.50
Jands HP12 12 Channels x 2.4 Kw	50.00	15.00	65.00	25.00
DMX Spitter	25.00	7.50	32.50	12.50
32 Amp 3 phase to 12 x 10 amp outlets distro	45.00	13.50	58.50	22.50

THEATRE LIGHTING



LED Smoke Jet

Smoke and Haze machines have become very popular in stage lighting. The main purpose of using smoke is to allow the beams of light to be seen (no smoke - no beams). Low Fog machines can be used to give the walking on a cloud effect. Other effects like bubble and snow machines can also add that extra wow to your show.

EFFECTS MACHINES (all machines supplied with liquid)	FIRST DAY	ADDITIONAL DAY	LONG TERM P/W 3 WEEKS MIN.	PERM HIRE P/W 3 MONTHS MIN.
DJ Power H6 Smoke Machine	28.00	8.40	36.40	14.00
DJ Power H7 Pro Smoke Machine	35.00	10.50	45.50	17.50
DJ Power DSK1500 Smoke Jet with LED Lights	50.00	15.00	65.00	25.00
DJ Power DFZ-600 Hazer (water based)	28.00	8.40	36.40	14.00
DJ Power DFZ-660 Hazer (oil based)	60.00	18.00	78.00	30.00
DJ Power H3 Hazer (water based)	60.00	18.00	78.00	30.00
DJ Power H4000 Haze Wave Machine (water based)	95.00	28.50	123.50	47.50
DJ Power IB1500 Low Fog (dry ice not included)	65.00	19.50	84.50	32.50
DJ Power H8500A Low Fog - High Output	190.00	57.00	247.00	95.00
DJ Power H8 Pro Bubble Machine	30.00	9.00	39.00	15.00
DJ Power HS2 Snow Machine	30.00	9.00	39.00	15.00



Tubular Ripple

Theatrical lighting effects are used to give the look or the impression needed for your show. Create water, fire etc., easily...

THEATRICAL LIGHTING EFFECTS	FIRST DAY	ADDITIONAL DAY	LONG TERM P/W 3 WEEKS MIN.	PERM HIRE P/W 3 MONTHS MIN.
Tubular Ripple (water/cloud effect)	35.00	10.50	45.50	17.50
Water wave (water effect projector)	25.00	7.50	32.50	12.50
Inferno (fire effect projector)	25.00	7.50	32.50	12.50
Diablo Flame light (250mm flame)	22.00	6.60	28.60	11.00
Dream FX Fame Light (1.5m flame)	35.00	10.50	45.50	17.50



1500w Strobe

Strobes are a very fast flashing light. When flashing at about 10 times a second they will give the well known freeze motion effect. Ask us about the best way to achieve this effect.

STROBES	FIRST DAY	ADDITIONAL DAY	LONG TERM P/W 3 WEEKS MIN.	PERM HIRE P/W 3 MONTHS MIN.
75w Strobe	10.00	3.00	13.00	5.00
750w Strobe	20.00	6.00	26.00	10.00
1500w Strobe	25.00	7.50	32.50	12.50
3000w Strobe	40.00	12.00	52.00	20.00
LED Strobe - 1500	30.00	9.00	39.00	15.00

UV lights (black light) give an invisible light that make white, fluorescent material and paint glow in the dark. A classic effect.



UV LED Par

UV LIGHTS (ultraviolet)	FIRST DAY	ADDITIONAL DAY	LONG TERM P/W 3 WEEKS MIN.	PERM HIRE P/W 3 MONTHS MIN.
Dream FX UV Studio ParLED (36 x 1xUV)	19.50	5.85	25.35	9.75

THEATRE LIGHTING

Winch up stand with "T" Bar



Stands come in different sizes and heights depending on the weight being carried

STANDS

	FIRST DAY	ADDITIONAL DAY	LONG TERM P/W 3 WEEKS MIN.	PERM HIRE P/W 3 MONTHS MIN.
H and Barrel floor Stand	2.00	0.60	2.60	1.00
Push up Stand 3 mtr.	6.00	1.80	7.80	3.00
Winch Up Stand 4 mtr.	18.00	5.40	23.40	9.00
L-16 Lifter 4.9 mtr.	48.00	14.40	62.40	24.00
Chain Block (1 tonne)	35.00	10.50	45.50	17.50
Shot Bags	2.00	0.60	2.60	1.00

Light weight aluminium trusses are a good way of hanging lights across a stage. They can be joined together to span long distances.



3m. Tri Truss

TRUSS

	FIRST DAY	ADDITIONAL DAY	LONG TERM P/W 3 WEEKS MIN.	PERM HIRE P/W 3 MONTHS MIN.
.5 and 1 m. 290 x 290 Tri Truss	9.00	2.70	11.70	4.50
2 m. 290 x 290 Tri Truss	12.00	3.60	15.60	6.00
3 m. 290 x 290 Tri Truss	15.00	4.50	19.50	7.50
1 m. 390 x 390 Tri Truss	12.00	3.60	15.60	6.00
3 m. 390 x 390 Tri Truss	18.00	5.40	23.40	9.00
BBQ Plate for Tri Truss	12.00	3.60	15.60	6.00

RISERS

	FIRST DAY	ADDITIONAL DAY	LONG TERM P/W 3 WEEKS MIN.	PERM HIRE P/W 3 MONTHS MIN.
Riser Module 1m x 1m	16.50	4.95	21.45	8.25
Riser Quarter Circle 1m x 1m	16.50	4.95	21.45	8.25
Riser Steps 1m x 390mm	9.00	2.70	11.70	4.50
Riser Safety Rail	10.00	3.00	13.00	5.00
Riser Skirts 2m wide - 200/400/600/800mm	6.00	1.80	7.80	3.00



Stage risers are used to make up different size, height and shape stages. Each section is 1m x 1m. The leg heights start at 200mm and go up to 800mm in increments of 200mm. (200mm, 400mm, 600mm, 800mm).

Dressing the stage and rooms is a very important part of a professional look. The pole, base and curtain system is a quick and easy way of achieving this.

CURTAINS

	FIRST DAY	ADDITIONAL DAY	LONG TERM P/W 3 WEEKS MIN.	PERM HIRE P/W 3 MONTHS MIN.
10m x 4m Black drape	50.00	13.50	58.50	25.00
Drape System : Poles, base, drape - 4m wide x 3m high	55.00	16.50	61.50	27.50
LED Starcloth inc Controller - 4m wide x 3m high	95.00	28.50	123.50	47.50

PARTY LIGHTING



Spider

Add the fun to your party with lighting. Most are sound activated and will move to the beat. By adding smoke you will see the beams as they dance around the room.

PARTY AND DJ LIGHTS

	FIRST DAY	ADDITIONAL DAY	LONG TERM P/W 3 WEEKS MIN.	PERM HIRE P/W 3 MONTHS MIN.
Shimmer (white)	6.00	1.80	7.80	3.00
LED white spider	25.00	7.50	32.50	12.50
LED Crystal Ball	25.00	7.50	32.50	12.50
Rover	25.00	7.50	32.50	12.50
Hallucination	25.00	7.50	32.50	12.50
Orbiter	25.00	7.50	32.50	12.50
Fascination	25.00	7.50	32.50	12.50
Ego 5—Kaleidoscope	25.00	7.50	32.50	12.50
Umbrella Light - LED	25.00	7.50	32.50	12.50
EFX 500	35.00	10.50	45.50	17.50



Laser

Laser lights add excitement to any event. Whether it's the image and shape projection or the dramatic beam effects through the smoke

LASERS

	FIRST DAY	ADDITIONAL DAY	LONG TERM P/W 3 WEEKS MIN.	PERM HIRE P/W 3 MONTHS MIN.
SPL-G-110 Green Laser	25.00	7.50	32.50	12.50
SPL-G-141 Green Laser	35.00	10.50	45.50	17.50
X-Field Green Laser	35.00	10.50	45.50	17.50
SPL-G-501 Green Curtain Laser	35.00	10.50	45.50	17.50
Dream FX 1000Mw Colour Laser	75.00	22.50	97.50	37.50
Big Dipper SD3000 3W Colour Laser	90.00	27.00	117.00	45.00



Mirror Balls

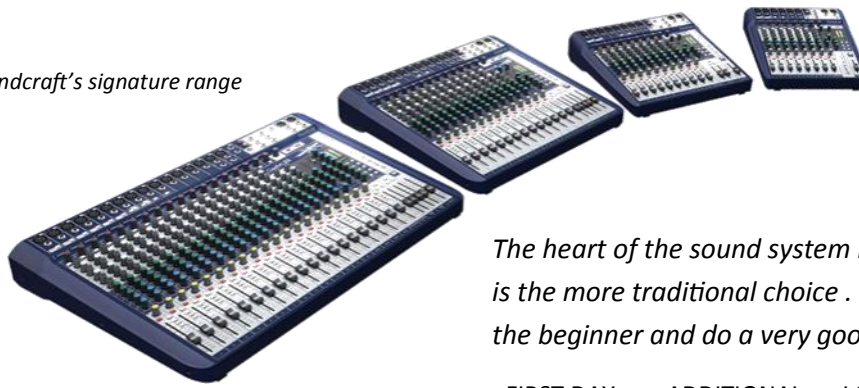
Mirror balls are a great way to add movement to a party. To get those moving dots around the room just light them with a few pin spots ... a truly iconic look!

MIRROR BALLS

	FIRST DAY	ADDITIONAL DAY	LONG TERM P/W 3 WEEKS MIN.	PERM HIRE P/W 3 MONTHS MIN.
300 and 400mm Mirror ball and motor	15.00	4.50	19.50	7.50
500 and 600mm Mirror ball and motor	20.00	6.00	26.00	10.00

AUDIO

Soundcraft's signature range



The heart of the sound system is the mixer. An analogue mixer is the more traditional choice. They can be easier to learn for the beginner and do a very good job.

ANALOG MIXERS

	FIRST DAY	ADDITIONAL DAY	LONG TERM P/W 3 WEEKS MIN.	PERM HIRE P/W 3 MONTHS MIN.
OTTO 4 channel mixer	12.00	3.60	15.60	6.00
Soundcraft MF8	25.00	7.50	32.50	12.50
Soundcraft Signature 12	30.00	9.00	39.00	15.00
Soundcraft FX16	35.00	10.50	45.50	17.50
Soundcraft Signature 22	40.00	12.00	52.00	20.00
Soundcraft GB24	70.00	21.00	91.00	35.00
Soundcraft GB32	100.00	30.00	130.00	50.00

Soundcraft's expression range

Digital is the way of the future. Like it's analogue older brother but with all the modern features. Once it's learnt there is no turning back... By adding their digital stage box life becomes even easier!



DIGITAL MIXERS

	FIRST DAY	ADDITIONAL DAY	LONG TERM P/W 3 WEEKS MIN.	PERM HIRE P/W 3 MONTHS MIN.
Soundcraft Expression 1 (16 channel)	60.00	18.00	78.00	30.00
Soundcraft Expression 2 (24 channel)	90.00	27.00	117.00	45.00
Soundcraft Expression 3 (32 channel)	100.00	30.00	130.00	50.00
Soundcraft 16/8 Stage box (uses cat 5 cable)	30.00	9.00	39.00	15.00
Soundcraft 32/8 Stage box (uses cat 5 cable)	55.00	16.50	71.50	27.50



DBX IEQ31

Equalisers, effect units, compressor, limiters, etc. can be added to change the inputs and outputs of the mixers to get the sound and control you need. Many mixers already have these features built into them, so check that before adding them.

PROCESSORS AND EQUALISERS

	FIRST DAY	ADDITIONAL DAY	LONG TERM P/W 3 WEEKS MIN.	PERM HIRE P/W 3 MONTHS MIN.
Lexicon MX 200 Multi-Effects Processor	17.00	5.10	22.10	8.50
DBX-1046 Compressor Limiter	17.00	5.10	22.10	8.50
DBX-1076 Quad Noise Gate	17.00	5.10	22.10	8.50
OTTO-DSC48 Speaker Processor	17.00	5.10	22.10	8.50
DBX-1231 Duel 31 Band Graphic EQ	17.00	5.10	22.10	8.50
DMX-IEQ31 Duel 31 Band Digital EQ inc: Built in Limiter/Noise Reduction/Feedback Suppression	22.00	6.60	28.60	11.00

AUDIO



RCF310A &
RCF705A Sub

This is where the work is done. As with most things it is important to choose the right speakers for the job. If unsure ask our experienced staff to get the best results.

Powered speakers each have their own amplifier built into them. This can make them easier to set up.

POWERED SPEAKERS

	FIRST DAY	ADDITIONAL DAY	LONG TERM P/W 3 WEEKS MIN.	PERM HIRE P/W 3 MONTHS MIN.
OTTO P210A 10" 2way Speaker-250w	20.00	6.00	26.00	10.00
OTTO P212A 12" 2way Speaker-300w	25.00	7.50	32.50	12.50
OTTO P215A 15" 2way Speaker-400w	30.00	9.00	39.00	15.00
OTTO H212A Pro 12" 2way Speaker-600w	30.00	9.00	39.00	15.00
OTTO H215A Pro 15" 2way Speaker-600w	35.00	10.50	45.50	17.50
OTTO F215A Dual 15" 2 Way Speaker-850w	45.00	13.50	58.50	22.50
OTTO H115A 15" Sub-600w	30.00	9.00	39.00	15.00
RCF 310A 10" 2-way Speaker-350w	30.00	9.00	39.00	15.00
RCF 322A 10" 2-way Speaker-350w	40.00	12.00	52.00	20.00
RCF 522A 12" 2-way Speaker-700w	45.00	13.50	58.50	22.50
RCF 705A 15" Sub-700w	45.00	13.50	58.50	22.50
JBL EON515 15" 2way Speaker-500w	45.00	13.50	58.50	22.50
JBL EON518S 18" Sub-500w	45.00	13.50	58.50	22.50

As the name implies unpowered speakers have a separate amplifier from the speaker. Traditionally this is done on the larger systems. In this way an amplifier can run a number of speakers, this also makes the speaker lighter.

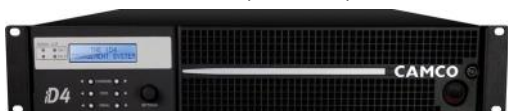
JBL SRX Range



UNPOWERED SPEAKERS

	FIRST DAY	ADDITIONAL DAY	LONG TERM P/W 3 WEEKS MIN.	PERM HIRE P/W 3 MONTHS MIN.
JBL SRX 712M 12" 2way Speaker-800w	30.00	9.00	39.00	15.00
JBL SRX 725 Dual 15" 2way Speaker-1200w	60.00	18.00	78.00	30.00
JBL SRX 718S 18" Sub-800w	30.00	9.00	39.00	15.00
JBL SRX 728S Twin 18" Sub-1600w	60.00	18.00	78.00	30.00
JBL VRX 932 12" Line Array-850w	60.00	18.00	78.00	30.00
JBL VRX 918 18" Sub-800w	30.00	9.00	39.00	15.00
OTTO 850 2way Line Array-850w	45.00	13.50	58.50	22.50
OTTO 182 Twin 18" Long Throw Sub-1600w	45.00	13.50	58.50	22.50

Camco iD4 power amp.



The power amplifier drives the unpowered speaker. The output of the mixer goes into the input of the power amplifier then output of the power amplifier goes to the unpowered speakers.

POWER AMPILFIERS

	FIRST DAY	ADDITIONAL DAY	LONG TERM P/W 3 WEEKS MIN.	PERM HIRE P/W 3 MONTHS MIN.
Camco iD4 2ch. 1900w + 1900w @ 4ohms	70.00	21.00	96.00	35.00

AUDIO



Shure microphones and BSS DI

There are many different microphones on the market. We have chosen the most common and reliable. If you are unsure which is best to do the job you require please asked our experienced staff.

MICROPHONES AND DIS

	FIRST DAY	ADDITIONAL DAY	LONG TERM P/W 3 WEEKS MIN.	PERM HIRE P/W 3 MONTHS MIN.
Shure SM58-Vocal Mic	8.00	2.40	10.40	4.00
Shure BETA58-Vocal Mic	10.00	3.00	13.00	5.00
Shure SM57-instrument Mic	8.00	2.40	10.40	4.00
Shure BETA 56A-instrument Mic	12.00	3.60	15.60	6.00
Shure BETA 52A-Bass instrument Mic	12.00	3.60	15.60	6.00
Shure MX391-Boundary Mic	12.00	3.60	15.60	6.00
Shure KSM32SL-Condenser Mic	39.00	11.70	50.70	19.50
BSS DI	10.00	3.00	13.00	5.00

Shure Radio Microphone system

Radio mics give you the freedom to work without cable. They come in many sizes for different applications . Each microphone comes with it's own receiver.



RADIO MICOPHONES

	FIRST DAY	ADDITIONAL DAY	LONG TERM P/W 3 WEEKS MIN.	PERM HIRE P/W 3 MONTHS MIN.
Shure Beta 58-Radio Vocal Mic / SLX4	48.00	14.40	62.40	24.00
Shure WL93-Miniature Lapel Radio Mic/SLX1/SLX4	48.00	14.40	62.40	24.00
Shure WL85-Lapel Radio Mic /SLX1/SLX4	48.00	14.40	62.40	24.00
Shure MX153-Head worn Mic /SLX1/SLX4	48.00	14.40	62.40	24.00
Shure Jack input Radio pack SLX1/SLX4	48.00	14.40	62.40	24.00

Radio mics include SLX4 Receiver and SLX1 Transmitter where applicable



Talk back master with headset

Talk Back is used to keep everyone running the show in touch with each other. Having a number of different channels on hand is useful as it allows you to talk to different people at different times

TALK BACK

	FIRST DAY	ADDITIONAL DAY	LONG TERM P/W 3 WEEKS MIN.	PERM HIRE P/W 3 MONTHS MIN.
Ezicom 2 channel Master with headset	35.00	10.50	45.50	17.50
Ezicom Sub Master with headset	18.50	5.55	24.05	9.25

AUDIO



Pioneer CDJ2000s & DJM800 Mixer

DJ mixers and CD players allow the mixing of CDs, vocals and effects.

DJ EQUIPMENT

	FIRST DAY	ADDITIONAL DAY	LONG TERM P/W 3 WEEKS MIN.	PERM HIRE P/W 3 MONTHS MIN.
Stanton C-314 CD player	28.00	8.40	36.40	14.00
Pioneer CDJ1000 player	55.00	16.50	71.50	27.50
Pioneer CDJ2000 player	120.00	36.00	156.00	60.00
Pioneer DJM 300 mixer	28.00	8.40	36.40	14.00
Pioneer DJM 400 mixer	45.00	13.50	58.50	22.50
Pioneer DJM 800 mixer	75.00	22.50	97.50	37.50



Traditional Multicore

Soundcraft 32/8 Digital stage box



The best place to mix the audio for a show is out the front of the venue (Front of house). Traditionally this is done with a cable for each channel in each direction encased together in one cable — a multicore. With the new trend to digital this can now be done with one small cable (Cat5) with a digital mixer at one end and a digital stage box at the other.

MULTICORES

	FIRST DAY	ADDITIONAL DAY	LONG TERM P/W 3 WEEKS MIN.	PERM HIRE P/W 3 MONTHS MIN.
8 channel Multicore 8/4 -50m (with foldback spilt)	20.00	6.00	26.00	10.00
16 channel Multicore 16/4 35m	20.00	6.00	26.00	10.00
24 channel Multicore 24/4 50m	35.00	10.50	45.50	17.50
24 channel Multicore 24/4 50m (with foldback spilt)	45.00	13.50	58.50	22.50
32 channel Multicore 32/4 50m	65.00	19.50	84.50	32.50
Soundcraft digital 16/8 Stage box (uses cat 5 cable)	30.00	9.00	39.00	15.00
Soundcraft digital 32/8 Stage box (uses cat 5 cable)	55.00	16.50	71.50	27.50

For a larger range of rigging please go to our lighting hire section

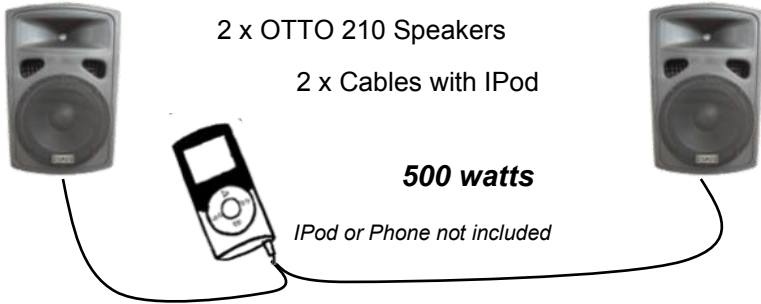


STANDS

	FIRST DAY	ADDITIONAL DAY	LONG TERM P/W 3 WEEKS MIN.	PERM HIRE P/W 3 MONTHS MIN.
Microphone stand - tall	6.00	1.80	7.80	3.00
Microphone stand - short	6.00	1.80	7.80	3.00
Speaker stand	6.00	1.80	7.80	3.00

AUDIO

HOME PARTY PACK



- 2 x OTTO 210 Speakers
- 2 x Cables with iPod

500 watts

iPod or Phone not included

\$32* for the night

*“Great for home parties and small halls....
Small enough to fit in any car but with
a great big party sound.”*

SPEECH NIGHT PARTY PACK



- 2 x OTTO 212 Speakers & Stands
- 1 x Shure SM58 Microphone & Stand

- 1 x Soundcraft Compact 4 Mixer

600 watts

*iPod or
Phone not*

\$70* for the night

*“Award nights, Wedding, Karaoke..
When you need a small PA and
want to add your music to the night
this is a great system”*

MEDIUM PA SYSTEM



- 1 x 8 channel mixer
- 2 x JBL SRX725 Speakers
- 3 x RCF 310 Speakers
- 1 x Camco iD4 Amp
- 3 x Shure SM58 Microphone & stand

3450 watts RMS

\$275* for the night

HI TECH PA SYSTEM



- 1 x 16 channel Soundcraft **digital** mixer
- 1 x 16/8 Soundcraft digital stage box
- 4 x JBL SRX725 Speakers
- 4 x JBL VRX912 Line array Speakers
- 4 x JBL SRX712m Fold back Speakers
- 3 x Camco iD4 Amp
- 1 x Shure SM58 Radio mic
- 3 x Shure SM58 vocal mics

9600 watts RMS

\$750*
for the night

PARTY LIGHTING



\$70 for the night

Dance Party Pack

- 2 x Moving Beam Lights
- 1 x Party Smoke Machine



\$70 for the night

Kids Party Pack

- 2 x Moving Effect Lights
- 1 x Bubble Machine



\$70 for the night

Heavy Metal Rave Pack

- 1 x Green Laser
- 1 x 750w Strobe



\$125 for the night



Halloween Party Pack

- 2 x LED UV Studio Pars
- 1 x 750w Strobe
- 1 x Low Fog Machine (dry-ice not included)



\$170 for the night



Large Rave Pack

- 1 x Full Colour 1000mw Laser
- 2 x Martin EFX500 Effects Lights
- 1 x



HIRE CONDITIONS

The 'Hirer'

In these conditions and in the Hiring Agreement 'Hirer' means any person, company, corporation or Government instrumentality (including the personal representatives and permitted assigns and any person or corporation entitled or required by law to administer the 'Hirers' affairs) who shall hire any equipment from LIGHTING LAB.

Insurance

All responsibility for goods on hire is with the 'Hirer'. No unit is covered by insurance whilst on hire. The 'Hirer' agrees to pay all costs for unpaid hire, damage to, or loss of any goods on hire.

Damages

The 'Hirer' agrees to pay all repairs or repair costs for equipment damaged by the 'Hirer' and to reimburse LIGHTING LAB at the currently applicable daily hire rate for that equipment for so long as it is unable to be re-lent following damage sustained during hire. In the event that the equipment is damaged beyond economic repair the 'Hirer' agrees to pay LIGHTING LAB the pre-damage value of that equipment.

Late Return

Should the equipment be returned after 11am of the specified return date LIGHTING LAB reserves the right to charge rental until 11am the following business day(s).

Default in Payment / Right of Recovery

If the 'Hirer' shall make default in punctual payment of any monies payable hereunder, or fail to observe and perform the terms and conditions hereof, it shall be lawful for LIGHTING LAB or its assigns to retake possession of the said equipment and for that purpose to enter into or upon any premises where the same may be and termination of the hiring under this clause shall not effect the right of LIGHTING LAB to recover from the 'Hirer' any monies payable hereunder, or damages for breach of these Conditions.

CONTACT US

Phone (03) 9898 7064

Email - HIRE

hire@lightinglab.com.au

Email - SALES

sales@lightinglab.com.au



* **Business Hours**

9am - 5.30pm Monday to Friday

Saturday by appointment

Closed Sunday (no charge for Sundays)

* **Delivery**

is available on request at a minimum charge of \$70 each way in the metro area. This service is available Monday to Friday only.

www.lightinglab.com.au